

MCJ

44-293 Szczerbice, Poland

ul. Sumińska 2a

tel: +48/32/423 45 44

mcj@mcj.pl www.mcj.pl



### LED mirror IP44

- Please check the mirror after unpacking. Take off the protections and please check surface of the mirror. There shouldn't be any scratches, damage of glass surface etc.
- Montage surface should be flat. Other kinds of surfaces may cause that some tensions appear. These tensions may cause a crack of the mirror surface.
- Assembly must be performed by a qualified electrician. Pay attention to the minimum distance from showers, baths, etc.
- LED light source installed in this product should be replaced only by the manufacturer, service agent, or similarly qualified person.
- Before installation and other service activities, the influx of current must be urgently disconnected.
- Manufacturer takes no responsibility for any damage caused by wrong use of the product or by structural modifications.
- In case of any doubt, a specialist should be consulted.
- This product can be fixed on the normally flammable surfaces.
- Waterproof terminal block not included. Installation may require advice from a qualified person. For connection to the mains a waterproof terminal block for min 0.75mm<sup>2</sup> wires is needed (3-ways, 250V or higher, IP44 or higher).
- For indoor use only.
- Before you drill into a wall check if there aren't any pipes or cables inside.
- If an external hose or cord is damaged, it should be replaced only by the manufacturer, service agent, or similarly qualified person in order to avoid risk.
- Clean LED mirror with wet and delicate piece of cloth. Only mild cleaning agent can be used. Don't use solvents or abrasive cleaners. Keep the edges of the mirror dry after cleaning.
- Don't use the dimmers or other voltage regulators.
- Demister pad\* (if installed-optional equipment) is turned ON/OFF together with the LED lighting.
- **Mounting set is designed to install a mirror on the brick wall. Please use the method of assembly adequate with the character of this surface (for example: assembly pins for concrete surface; screws for wood surface etc). Fixing must be solid. Frame can not tilt after installation.**

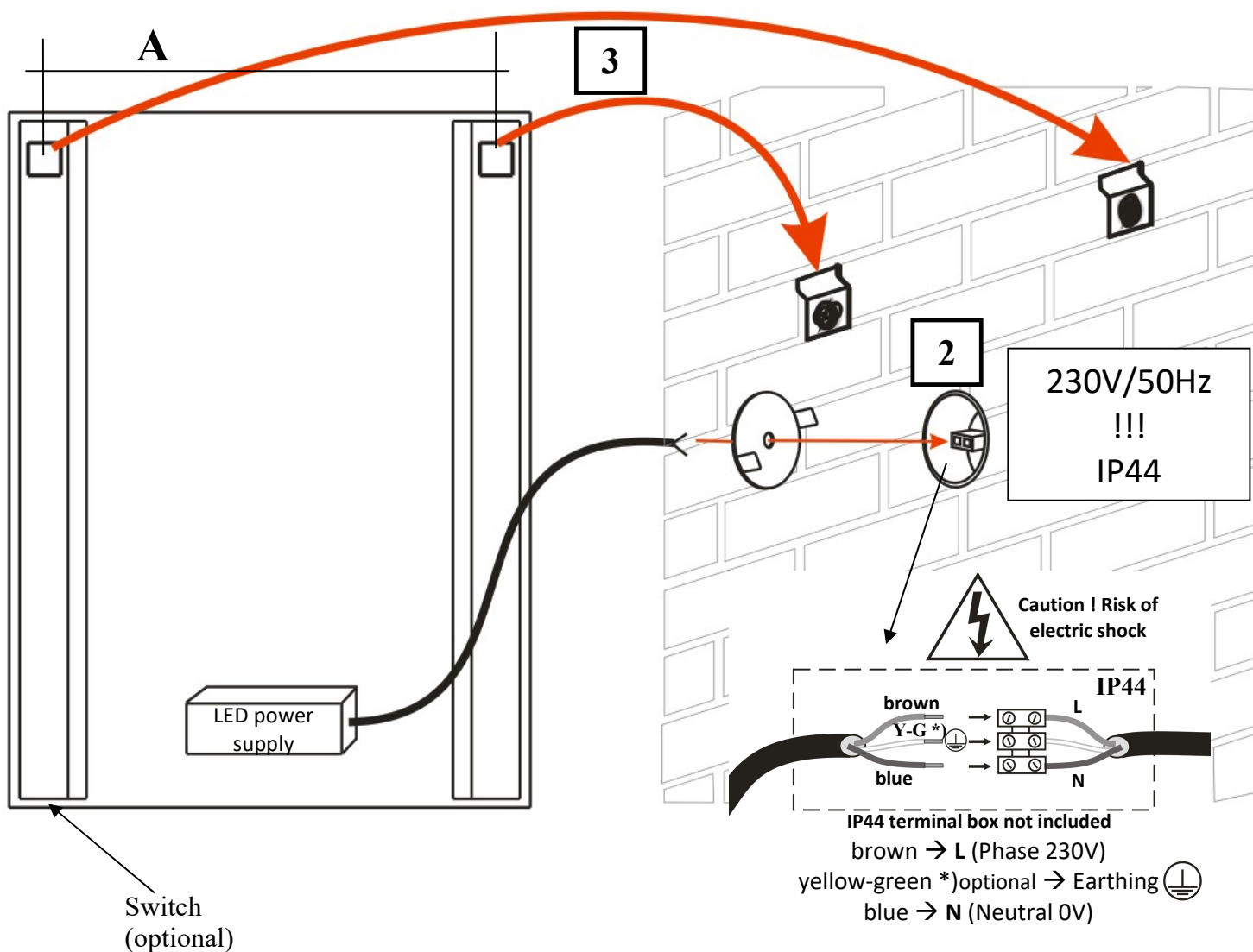
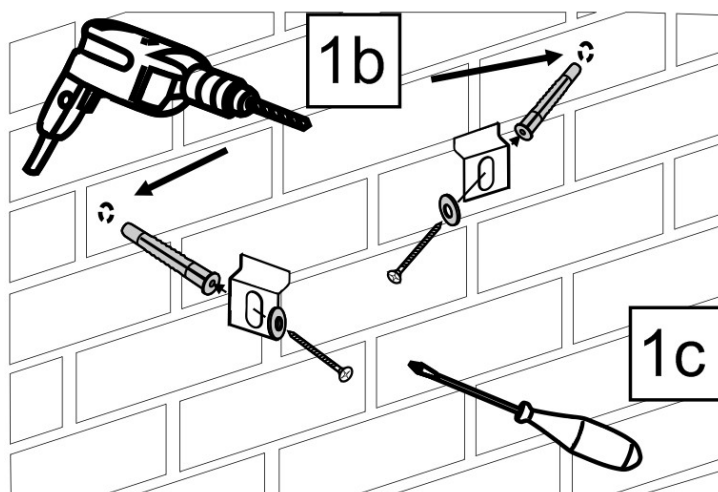
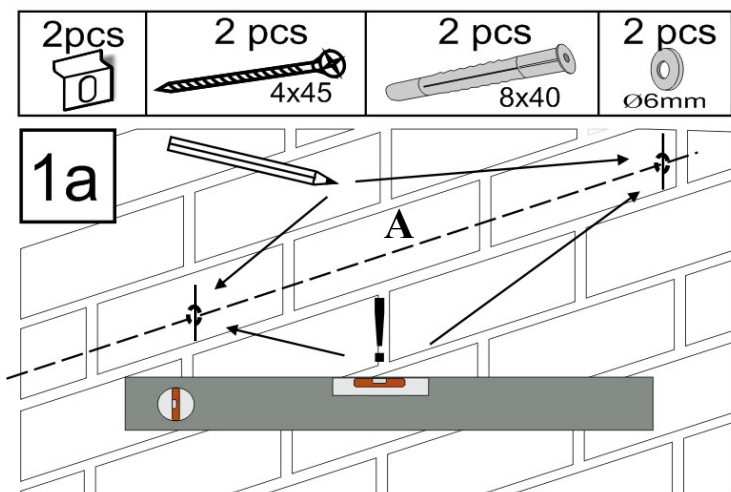
### II. Montage (on the brick wall):

**1a-b-c.** Measure the distance between holes (A) designed for holders. Use bubble level to keep the level. Mark and drill two holes. Fasten the holders using a mounting set. **2.** Connect a supply cable to the mains. This connection should be protected against direct touch. Degree of protection should be IP44 or higher. Use a waterproof terminal box with IP44 (or higher) or other method to keep the requirements of IP44. **3.** Hang the mirror on the holders. Turn ON the supply voltage.



- The WEEE symbol on the product or on its packaging indicates that this product must not be disposed of with your other household waste. Instead, it is your responsibility to dispose of your waste equipment by handing it over to a designated collection point for the recycling of waste electrical and electronic equipment

## LED mirror IP44 GENERAL INSTALLATION RULES \*)



\*) presented drawings do not reflect a specific mirror model (i.e. the real design of the mirror, its construction, additional elements, scale, technical solutions and others depend on the order)